



**Strong, silent and effortless**

the Liniar sliding patio door





# The Liniar sliding patio door

The traditional sliding patio door has been given a new lease of life by Liniar. Designed from scratch, you'll be amazed at the difference.

From the moment you touch the Liniar door, you'll be struck by the ergonomic design, the effortless opening mechanism, the smooth motion and the noiseless glide.

Fitted with Liniar's revolutionary multi-wheeled 'air glide' system, the Liniar sliding patio door is perfectly balanced as it moves along its track.

The built-in brushes gently sweep away any minor debris each time the door is closed, aiding its silent action and helping it to maintain efficient operation.

With fully sculptured features providing a beautiful finish, the Liniar patio door's ultra-slim sightlines ensure you enjoy the maximum amount of natural light in your home.

And with a range of colour and handle options, you can personalise your Liniar door to match the rest of your home, making it seem like it was designed just for you!



U-values as low  
as **1.3 W/m<sup>2</sup>K**

## Helps to keep the heat in

One of the most effective ways you can save energy within your home is through installing energy efficient windows, doors and roofs.

Liniar frames outperform most of the other leading brands in the UK when it comes to thermal efficiency – mainly due to our innovative PVCu multi-chambered profile design.

The thermal efficiency of a door is measured in U-values, which demonstrate how effective the door is at preventing the transfer of heat into and out of a building.

The lower the U-value, the higher the doors' effectiveness at keeping the heat inside your home when it's cold outside.

The Liniar patio door can achieve a U-value of 1.3 W/m<sup>2</sup>K, meaning you'll be able to enjoy a warmer and quieter home as well as lower bills.

Furthermore, Liniar's patented bubble gasket is co-extruded as part of the manufacturing process – meaning seals aren't fitted separately and therefore unlikely to leak. A continuous seal all the way around the frame eliminates draughts and provides resistance to water.



## Designed for today's challenges

The Liniar patio door range is beautifully designed for modern living.

Built to create the perfect summer ambience, it's equally as important that our doors withstand the worst of the British winter weather.

We've rigorously tested our patio doors to make sure they exceed the appropriate British Standards for weather performance.

We also subject our doors to a regime of robot cyclic testing in our purpose-built laboratory, making sure all mechanical parts will stand up to the repeated operation necessary for daily living.

“Liniar's patented bubble gasket ensures a continuous seal all the way around the frame, eliminating draughts and providing water resistance.”





## Engineered for the future available today

---

The sliding patio door isn't a new invention

However, most doors available on the market today are still based on an original design, which means they come with inherent challenges. Who hasn't experienced a patio door that rocks on its track, or one that requires sheer brute force to open? And other patio doors have built a reputation for making it easy for thieves to break in to your home.

The Liniar design team have re-written the rule book with their innovative patio range – engineering in features such as a built-in decelerator and hidden 'crash stops' within the operating mechanism so as not to detract from the beautifully slim lines of the door.

Not only that, the Liniar door is one of the most secure patio doors money can buy. Liniar's patented ModLok™ modular locking mechanism surrounds the frame, delivering unparalleled strength combined with the highest levels of security. No more worries about break-ins, providing you and your family with peace of mind that your home is protected.

We've registered 4 patents and 1 community design to ensure only Liniar customers get all of the benefits from choosing a Liniar patio door.



## Uniquely smooth action

The Linar patio range was designed with our ground-breaking 'air glide' system, giving it a superbly smooth operation.

You'll be amazed at how light the door feels and how easy it is to open and close – not to mention how quiet it is too!

Other patio door systems are operated by just four steel wheels – the Linar door uses 8 hard-wearing self-lubricating acetal wheels, which makes it feel as though it's floating on air.

You really need to experience this for yourself, so visit your nearest Linar showroom to find out how our patio door is so different from its competitors.







## Safe as houses

ModLok™ is a sleek aluminium exo-skeleton that encases the frame of each door pane.



Combining steel reinforcing with a high security locking mechanism, ModLok™ technology ensures the Liniar patio door offers far greater security than most other products of its type.

With four hook bolts PLUS two shoot-bolts at the top and bottom of the sliding door, the Liniar patio's locking mechanism has been designed so that hooks do not protrude into the room even when the door is open.

To make your Liniar patio door even more secure, you can choose the latest 'anti snap' locking cylinders.

With 3-star security, these cylinders offer even more protection against the more determined would-be intruder using tools to break the cylinder and gain entry by manipulating the lock to open.

Not often considered when buying a new product for your home, ModLok™ also has a big environmental advantage when the patio doors eventually come to the end of their life. Metal parts included in other PVCu systems mean they cannot easily be recycled without lots of effort to strip them down.

However as ModLok™ comprises seamless steel sections, they are simple to separate once the doors are removed, enabling the PVCu to be recycled faster and with much less effort.



# Patio door configurations

If you have a wider opening span, why not consider a 3 or 4-pane patio door?

The supreme strength of Linar multi-chambered frames make them perfect for large openings – so conservatories, orangeries and garden rooms can all benefit from increased light flooding into your home.

Choose from the door configurations below:

**2 Pane**  
**Style OX/XO**



**3 Pane**  
**Style OXO**



**3 Pane**  
**Style XOO/OOX**



**3 Pane**  
**Style OOX/XOO (Optional)**



**4 Pane**  
**Style OXXO**



If you know the rough measurements of your aperture, you can see the configuration options available to you using the table below. Find the nearest width across the top, and look down the relevant column to ascertain the choices available.

Alternatively, if you've already decided on a certain configuration, look across from the number of doors to find the approximate opening width required.

Please note: this table is for guidance only; each set of Liniar patio doors is made to order to your own exact measurements.

	1.4m	1.6m	1.8m	2.0m	2.2m	2.4m	2.6m	2.8m	3.0m	3.2m	3.4m	3.6m	3.8m	4.0m	4.2m	4.4m
2 Pane OX/XO																
3 Pane OXO																
3 Pane XOO/OOX																
3 Pane OOX/XOO																
4 Pane OXXO																



## Colour options

The Liniar range comes in a wide variety of colours and finishes.

The basic Liniar PVCu profile is available in not just white, but also cream, caramel, brown and black substrates to offer a personalised appearance\*



– or why not change its appearance completely by choosing one of our authentic foil finishes?

Liniar's coloured and woodgrain effect foils are factory fitted at the production stage, so you can rest assured of a perfect finish. Guaranteed for a minimum of 10 years, foiled PVCu is a low-maintenance alternative to timber as it won't rot

or need repainting; all it requires is an occasional clean with soapy water.

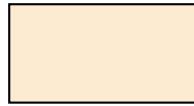
Every Liniar product is made in a wide choice of stocked coloured foils, ensuring short lead times when your project is urgent. If you're not in a rush, you could select a completely bespoke colour and finish from the huge range available. You can even select the substrate colour and choose to have the foil applied on just the interior or exterior if you prefer.

Please ask to see a Liniar foil swatch booklet to help you select the perfect colour choice.

## Standard foils



White Foil



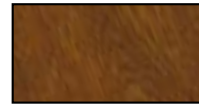
Cream Foil



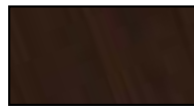
Chartwell Green



Irish Oak



Golden Oak



Rosewood



7016 Grey



Black

## Special foils



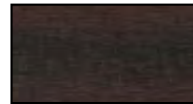
Cedar



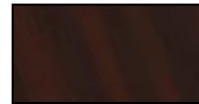
Oregon



Anteak



Sapeli



Mahogany



7038 Grey



7155 Grey



7012 Grey



7015 Grey



7016 SM Grey



Blue



Dark Green



Dark Red



## Hardware and accessories

Linair patio doors are supplied with ergonomic handles.

Choose from white, black, gold or chrome to co-ordinate with the rest of your furnishings.



White



Gold



Black



Chrome



## Accessories

As each Linair patio door is manufactured to your own specific requirements, you can accessorise it by adding a midrail - or even a letterbox!

Just ask your fabricator for the options available.



## Thresholds

Linear patio doors can be supplied with a standard cill, in colours to match your doors – or you can select our low threshold option in silver or gold to co-ordinate with the doors' hardware. The low threshold can also be cill mounted for ultimate flexibility.



## Thermally broken low threshold

You can also add an optional tray to make your low threshold Part M compliant, meaning it's suitable for wheelchair users and family friendly.





## About Liniar

The most up-to-date system on the market.

Liniar was created by bringing together some of the most knowledgeable and forward thinking designers and experts in the window industry – with more than 500 years of experience between them.

HL Plastics Ltd, the company behind the Liniar brand, is an award-winning Derbyshire firm. Continued investment in infrastructure, technology, machinery and a great team of people has helped Liniar to become one of the market leading window systems with a customer base of specialist fabricators all over the UK, all creating beautiful products to supply to installers and homeowners.

The design team behind the Liniar brand is constantly pushing the boundaries of product innovation, with a focus on research and new products in development all the time. As a result, Liniar has developed a well-earned reputation within the window industry for innovation.

By being agile and responsive to customer feedback, Liniar has developed an impressive portfolio of products.



## Matching products

Not just windows - the Liniar system has been developed by an innovative design team, resulting in a wide range of matching products for the whole property.

When you order Liniar products from the same installer, you'll not only get a perfect match - your installation will be covered by a single point of guarantee.

All Liniar profiles are manufactured using tried and tested formulations from approved suppliers and are guaranteed for 10 years.

Some exclusions apply - please see [liniar.co.uk/about/guarantees](http://liniar.co.uk/about/guarantees) for more information.



### Windows

The Liniar system is the most technically advanced PVCu profile in the UK - and casement windows can achieve an A+ Windows Energy Rating with double glazing and A++ with triple glazing.



### Doors

The Liniar range of PVCu front doors is designed to match perfectly with windows to create a co-ordinated appearance and a draught-free entrance to your home.



### PVCu Bi-Folding Doors

The Linar PVCu bi-fold is also available with patented ModLok™, offering extra security and additional strength by seamlessly combining reinforcement to fully open up your room.



### Alumina Bi-Folding Doors

Linar's unique aluminium bi-fold door, Alumina spans apertures up to 6.5m wide, with sashes up to 1.2m wide and 2.5m high - and can even be fully foiled.



### French Doors

Linar's stunning range of PVCu French doors comes with the same high specification and colour options as its window range, with patented low and ultra-low threshold options.



### Conservatories

Using the latest technology to bring you the most energy efficient glazed roof system in the UK, the Linar roof is available in a huge choice of styles, shapes and designs.



### Soffits and Fascias

Liniar's soffits, fascias and trims offer a perfectly matching solution to any installation, in a wide range of colours and finishes.



### Decking

Liniar decking is perfect for a low maintenance finish - with plain or foiled balustrades and a range of woodgrain deckboards.



### Fencing

Liniar's ranges of PVCu fencing, decking and piling products offer a high quality, low-maintenance option for landscaping.



### Piling

With five styles of piling for a range of applications, including Liniar's innovative log pile, which provides an attractive finish for any retention project.



# 7 great reasons to choose Liniar

**Innovative** - the only entirely new PVCu window and door profile system to be developed in the last 10 years

**Energy efficient** - designed from scratch to achieve the pinnacle of thermal performance and retain more heat in your property

**Safe and secure** - engineered with built-in security features and approved by independent testing facilities

**British made** - frames are extruded in our state-of-the-art factory in the heart of Derbyshire

**Lead free** - all Liniar profiles are extruded using materials that are 100% lead free

**Quality assured** - backed with ISO 9001 accreditation for your peace of mind

**Guaranteed** - all Liniar frames are guaranteed to not warp, split or discolour for a minimum of 10 years



Your Liniar stockist is:

**Liniar**  
Flamstead House  
Denby Hall Business Park  
Denby  
Derbyshire DE5 8JX

Tel: +44 (0)1332 883900  
Fax: +44 (0)1332 883901  
Email: [sales@liniar.co.uk](mailto:sales@liniar.co.uk)

[www.liniar.co.uk](http://www.liniar.co.uk)

